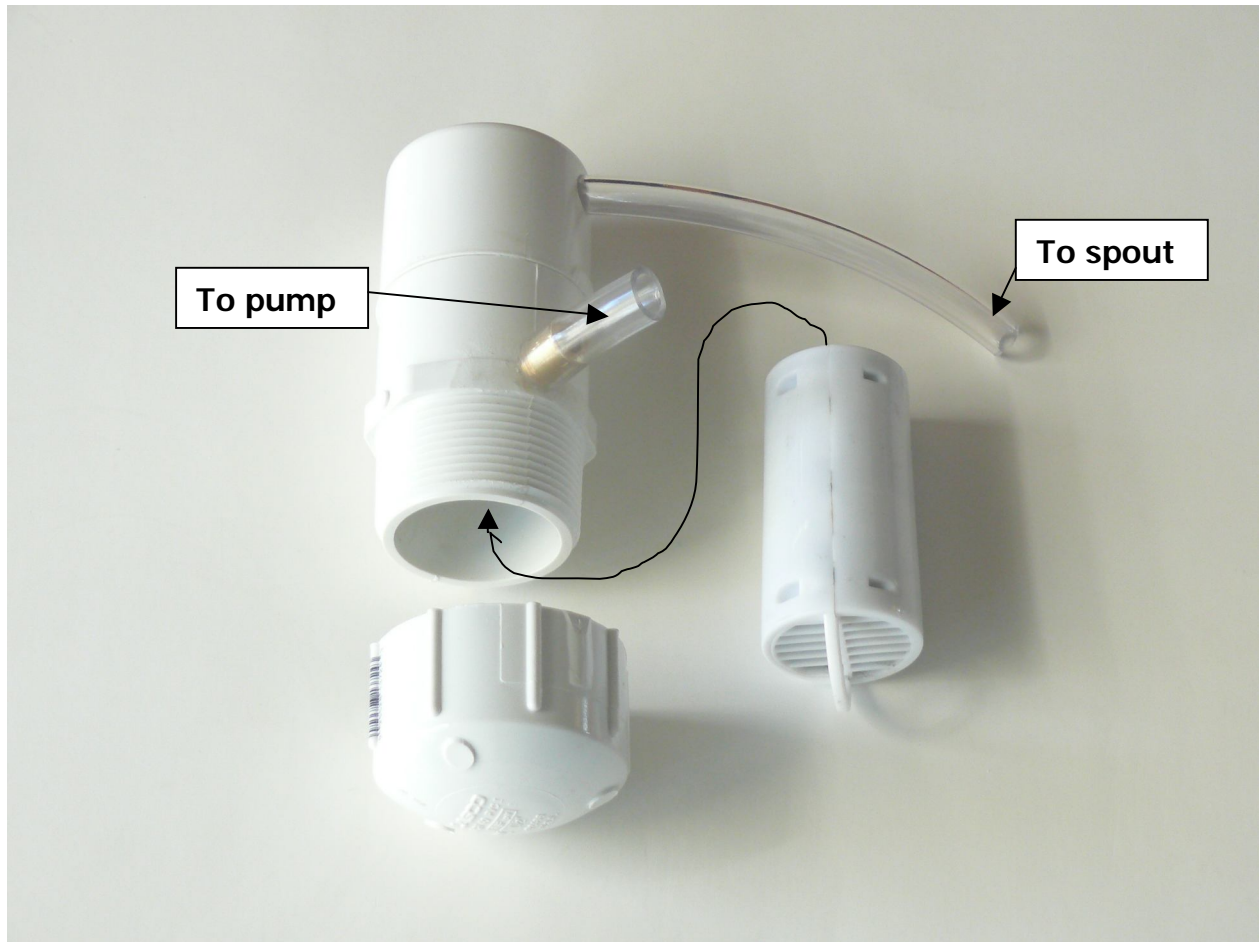


Drinkwell 360 replacement filters



PAC08-13069

40744Q

www.petfountain.com

Replacement Filters 3-Pack

Only for use with the Drinkwell® 360 Fountain

Filters Keep Water Clean and Fresh

- Bio Density Polyester Pad captures debris
- Granulated Carbon for extended action

The consistent circulation and "Practice in the Drinkwell" Pet Fountain removes bad tastes and odors, making the water fresher and more appealing to your pet.

Filters Keep Water Clean and Fresh

- Bio Density Polyester Pad captures debris
- Granulated Carbon for extended action

Veterinary Ventures, Inc.
PO BOX 19712
Kenosha, WI 53112

www.petfountain.com

Replacement Filters 3-Pack

Only for use with the Drinkwell® 360 Fountain

Instructions:

Rinse the filter thoroughly under cool water before placing into the filter housing. This will remove any loose charcoal dust, which is harmless. A small amount of charcoal dust may shed for the life of the filter. This is normal and not harmful to your pet.

Remove the Flow Control Cap and spouting tube, unscrew the Filter Housing Cap and insert the filter. The Drinkwell 360's Filter Housing has a pull tab which should be placed in the filter housing with the top facing upwards for easy placement and removal. Next, screw on the filter housing lid to secure the filter in place.

Filters should be changed every 2 weeks, depending on the size and number of pets using the fountain.

See product manual for detailed instructions or visit us at: www.petfountain.com